



GET YOUR PHD IN OUR LAB!

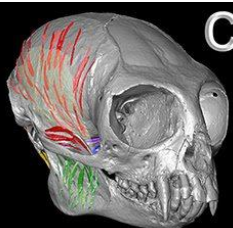
- 🐾 We study functional morphology and comparative anatomy in vertebrates, predominantly in primates and carnivorans. We examine the relationship between anatomical form and behavioral functions – especially the impact of diet upon the masticatory apparatus of modern and extinct species.
- 🐾 We are seeking highly motivated candidates who are interested in digital and gross dissection methods, muscle functional morphology, non-invasive behavioral research, and/or functional morphological approaches to paleontology.
- 🐾 **Great funding is available!** Our funding covers not only the student costs, but we also have extensive resources to support the costs of cutting-edge research – funding for hardware, software, and advanced data collection methods including nano-CT and MRI. Please contact us if you are interested or have students who might be!

AdamHRose@NCSU.edu

Adam Hartstone-Rose, PhD

Associate Professor of Biological Sciences
North Carolina State University

<https://hartstoneroselab.wordpress.ncsu.edu/>



Comparative
Anatomy &
Functional
Morphology

Research Lab

NC STATE UNIVERSITY